

# Drug retention rate of TNFi bio-originals and biosimilars in axSpA and PsA in routine rheumatology care in Germany – data from RABBIT-SpA

## Key findings

- Drug retention was very similar between bio-originals and biosimilars in axSpA and PsA patients receiving first-line TNFi
- These findings support the equivalence of BO and their respective BS

Anja Weiß<sup>1</sup>, Frank Behrens<sup>2</sup>, Matthias Worsch<sup>3</sup>, Katharina Pagel<sup>4</sup>, Georg Schett<sup>5</sup>, Anja Strangfeld<sup>1,6</sup>, Anne C Regierer<sup>1</sup>

<sup>1</sup>Deutsches Rheuma-Forschungszentrum Berlin, Germany, <sup>2</sup>Rheumatology University Hospital Fraunhofer Institute ITMP, Frankfurt, Germany, <sup>3</sup>Private Rheumatology Practice, Mühlhausen/Thüringen, Germany, <sup>4</sup>Private Rheumatology Practice, Hoppegarten, Germany, <sup>5</sup>Department of Internal Medicine 3, Rheumatology and Immunology, FAU Erlangen-Nuernberg and Universitätsklinikum Erlangen, Erlangen, Germany, <sup>6</sup>Charité – Universitätsmedizin Berlin, Berlin, Germany

German Rheumatism Research Centre,  
Registry Research in Rheumatology

## Methods

- RABBIT-SpA patients with initiation of first-line TNFi treatment bio-original (BO) or biosimilar (BS) were included in this analysis
- Descriptive statistics were used to compare patients treated with etanercept (eta) BO with BS and adalimumab (ada) BO with BS
- Drug retention was analysed using Kaplan-Meier curves. Treatment discontinuation was only considered when resulting from adverse events or treatment failure, termination for other reasons were censored

axSpA				PsA					
Eta BO n=95	Eta BS n=96	Ada BO n=137	Ada BS n=443			Eta BO n=48	Eta BS n=80	Ada BO n=75	Ada BS n=417
43	49	39	42	Women, %		56	65	48	57
43.7	46.7	43.3	43.8	Age, mean		50.4	54.7	48.8	52.4
11.2	12.1	12.2	11.8	Symptom duration, mean		9.6	10.8	8.8	8.9
5.9	4.9	5.5	4.9	Phys global disease act NRS 0-10, mean		5.6	4.4	4.7	4.8
5.9	5.9	5.6	5.6	Pat global disease act NRS 0-10, mean		5.8	5.4	5.3	5.7
2.9	2.7	2.8	2.7	ASDAS mean	DAPSA	25.2	22.6	20.4	20.7
14	21	23	29	ASDAS <2 %	DAPSA ≤4	0	6	11	3

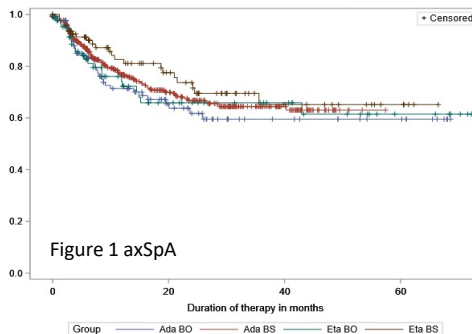
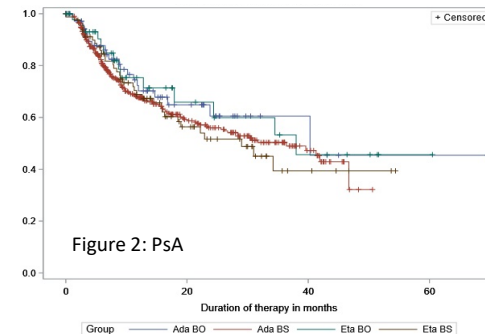


Figure 1/2: Kaplan-Meier curves of BO and BS for eta and ada.



Funding: RABBIT-SpA is currently supported by a joint, unconditional grant from AbbVie, Amgen, Biocon, Biogen, Celtrion, Hexal, Janssen-Cilag, Lilly, MSD, Novartis, Pfizer and UCB.

We thank all participating patients and rheumatologists!

